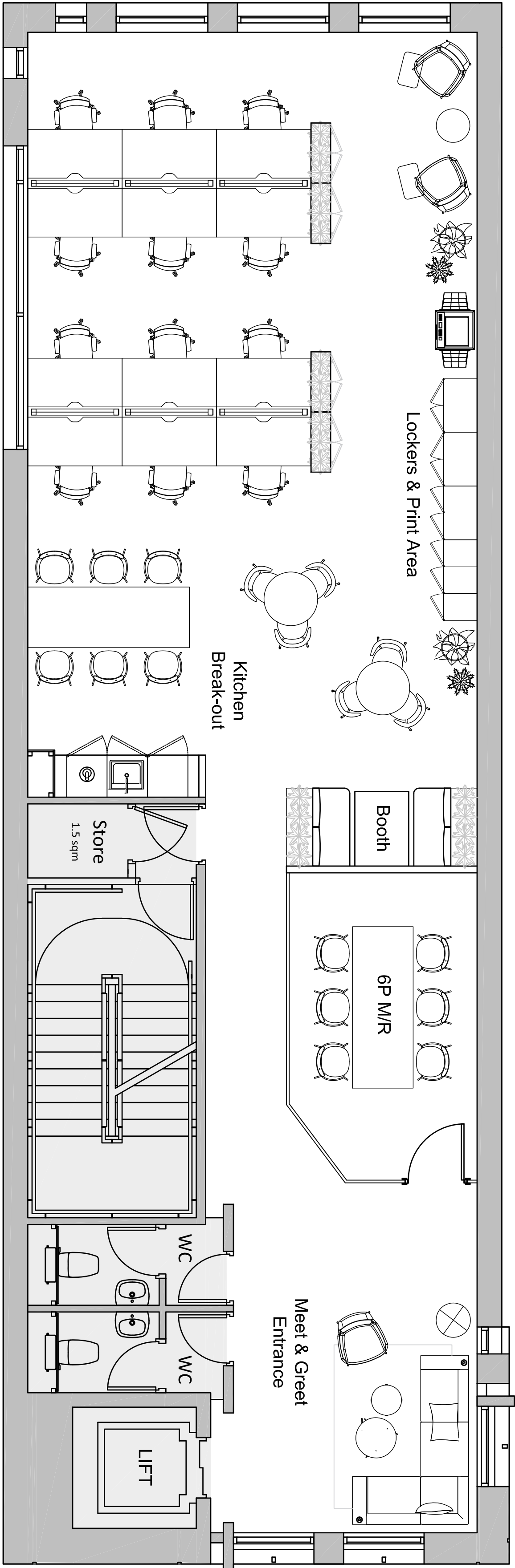


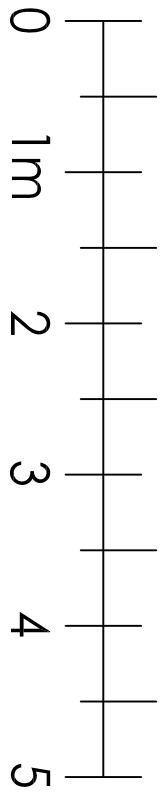
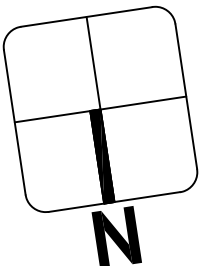
Office N1A - 118 sqm
1270 sqft

Schedule of Accomodation

- 12no. 1400 x 800mm desks @ 1:10 desk ratio
- Meet & Greet Entrance
- 1no. 6 Person Meeting Room
- Kitchen & Breakout
- 18no. Touchdown Seats
- 20no. Lockers
- Storage
- Print Area



Quay Street



Rev	Description	Date	Rev by

Client	PJD Property
Project	St John's Court

Drawing	2F Feasibility Layout - Option 2
Drawing Number	00_201
Date	18/08/2020
Drawn by	KJ
Dwg Status	Information
Scale	1:50@A1

